



# **FIRST METAL's skylight vent**

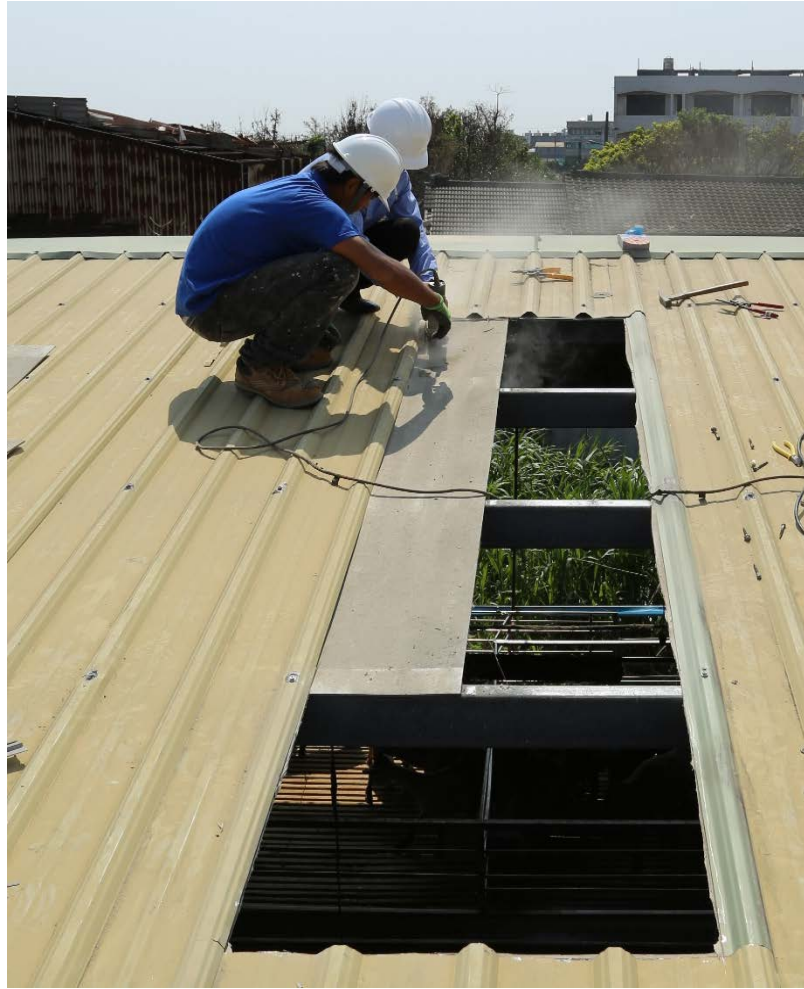
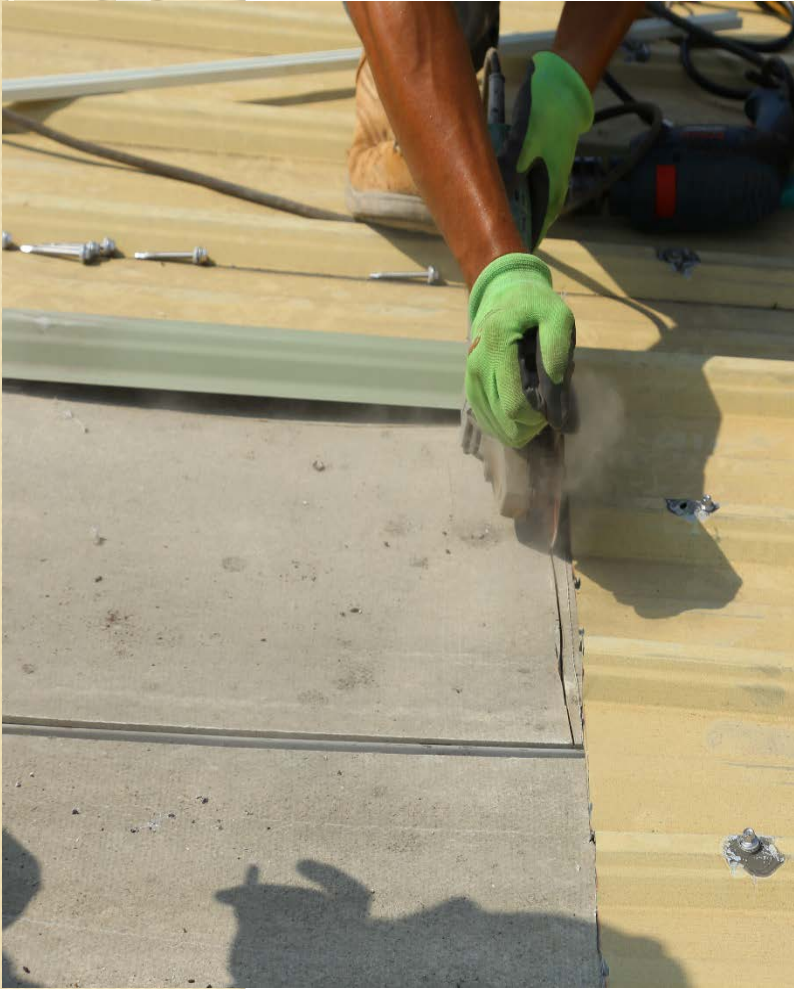
## **Installation Process**

# Directions to install corrugated sheets:

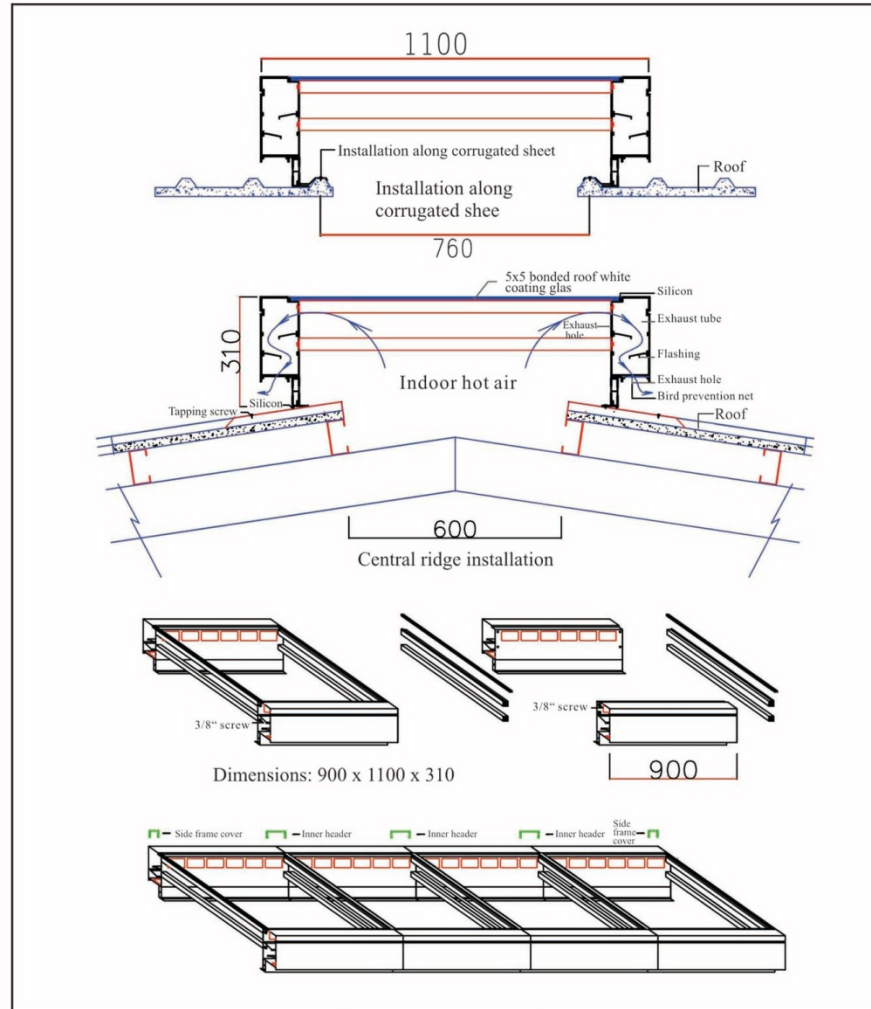
1. Remove each fixed screw of each corrugated sheet.
2. Measure and cut to the required length.



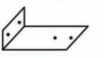






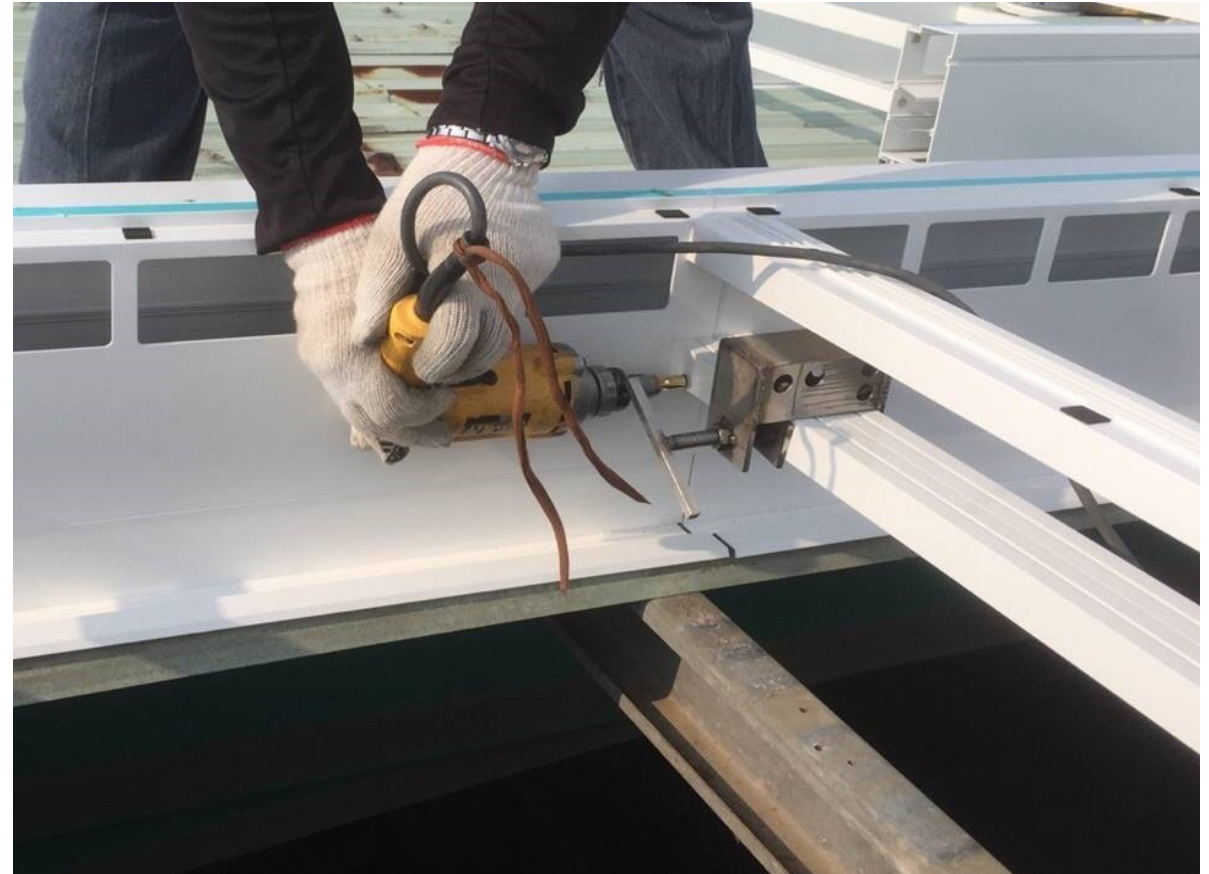
### 3. How to assemble skylight vents: (Refer to the diagram included with product)



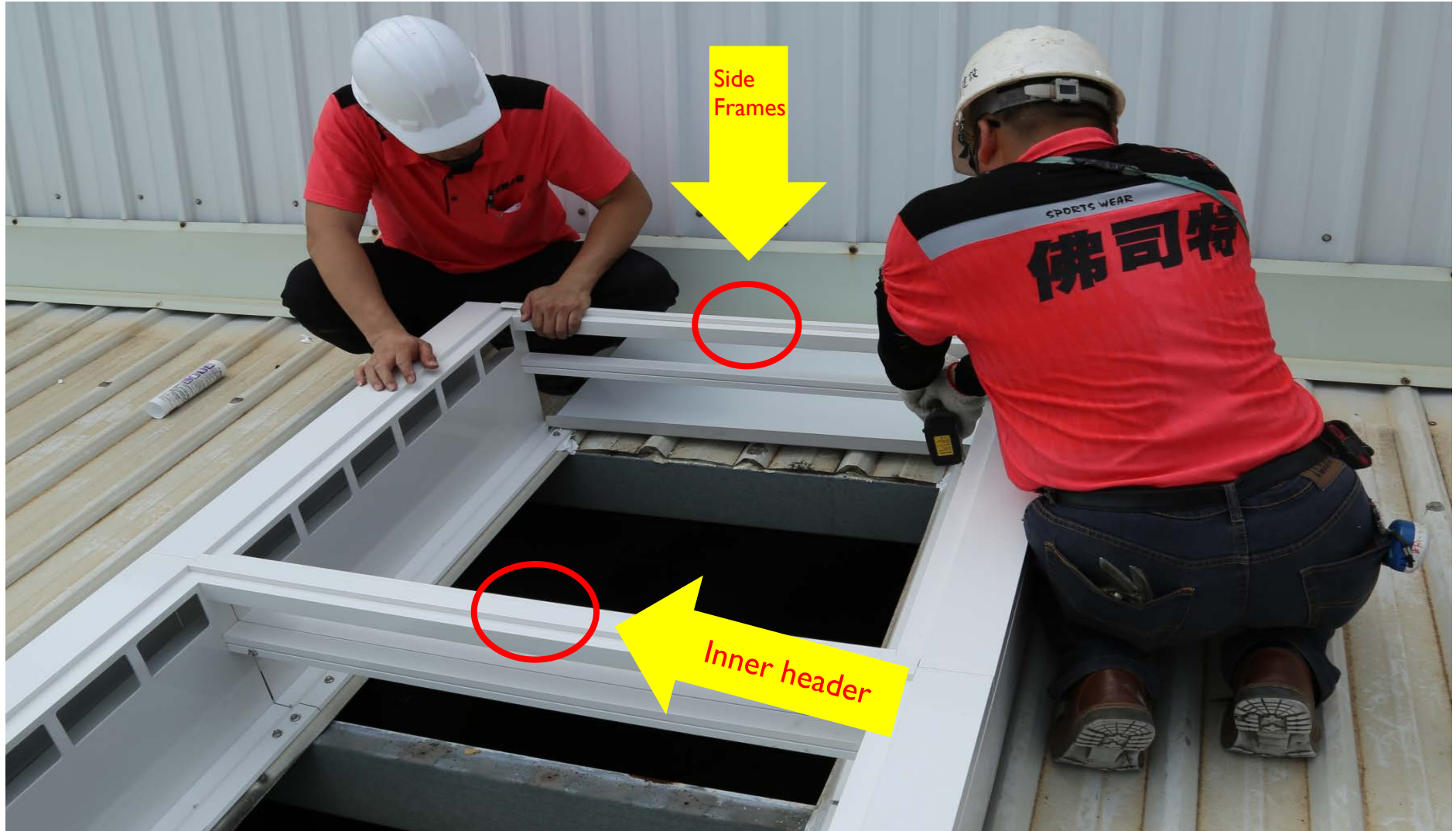
Description	Accessory A	Accessory B	Accessory C
1. This product is patent protected. DO NOT counterfeit. 2. Patent No.: M470862 3. Patent No.: M526600 4. This product employs aluminum exclusion materials. 5. Glass, side plate and fixed plate not included. 6. Accessories are optional and need to be purchased separately.	 Materials: stainless steel	 Materials: aluminum extrusion	 Materials: stainless steel
	Skylight vent side plate	Corrugated sheet fixed plate	Central ridge enforcement plate



**4. Place skylight headers in sequence;  
secure them by fixing two screws in between two frames.**



5. Close the gaps that are between two frames with an inner header; close both ends of the gap with side frames. (Refer to included diagram for details.)

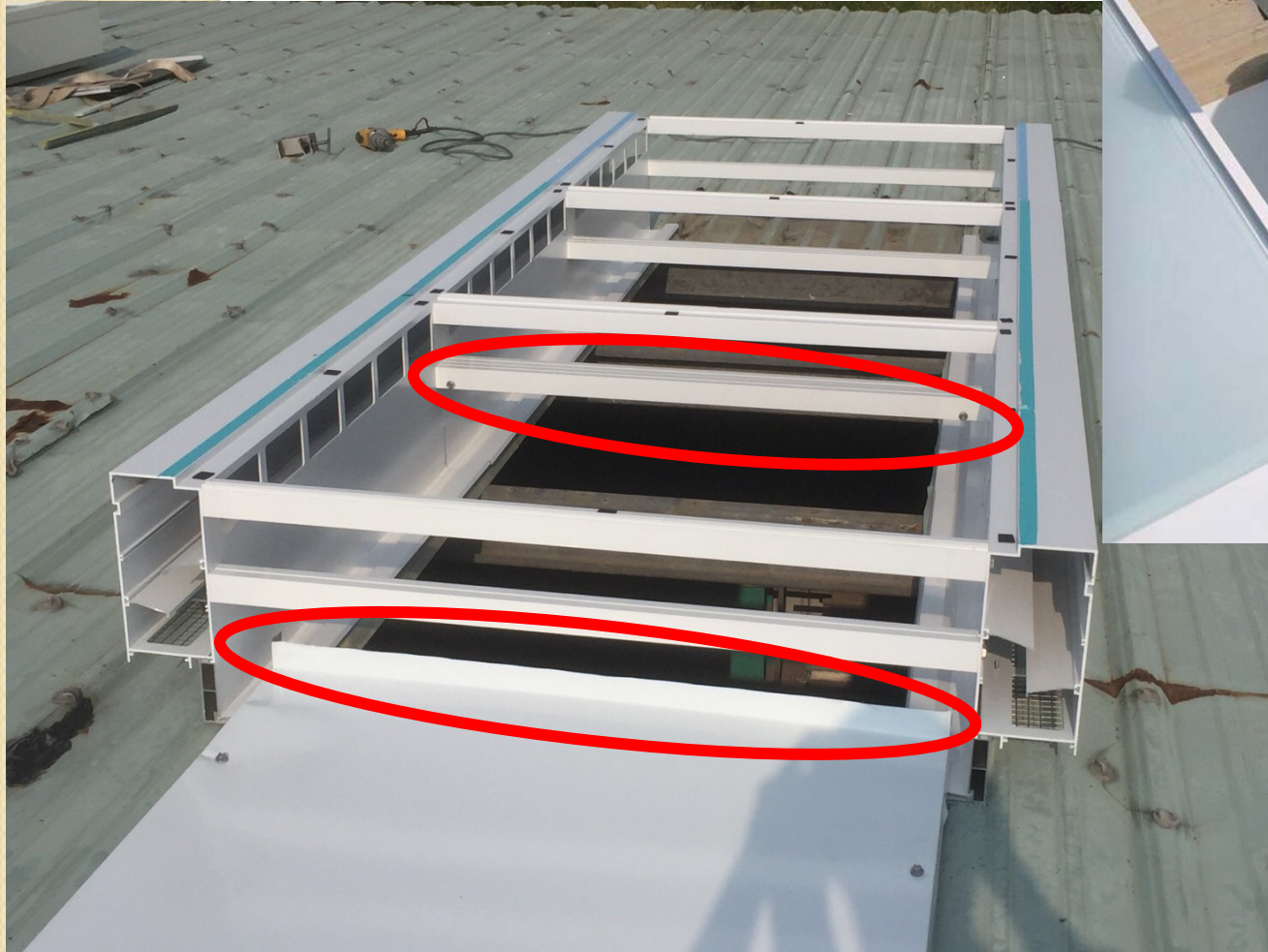




**6. Place accessory B onto C-purlin of iron sheet house on both ends with self-tapping screws and attach them to a corrugated sheet with nails.**

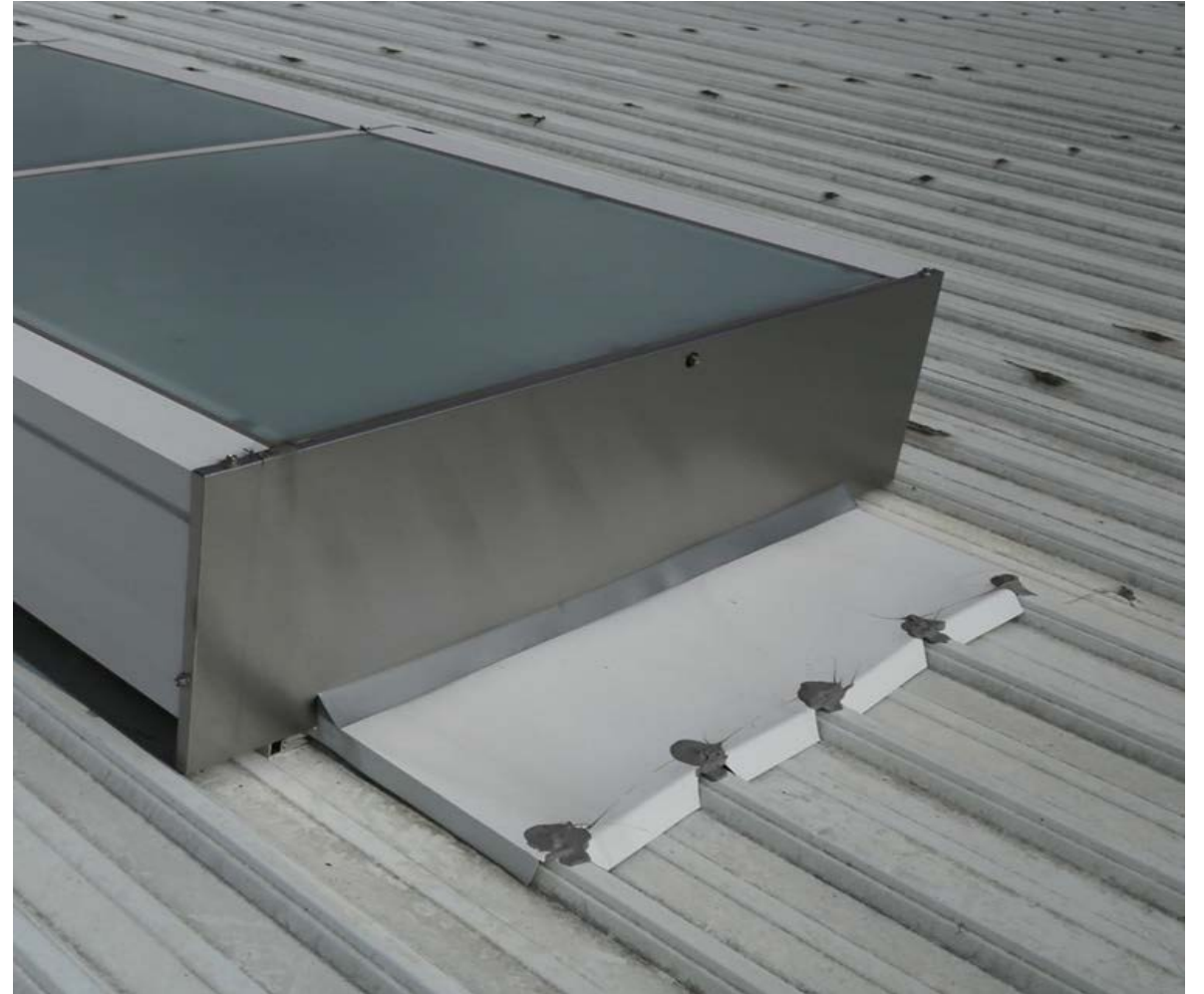


**7. Place flashing on the top; fold the flashing inward by 90 degrees.  
(To force water flow toward both sides.)**





**8. Place silicone coating at the bottom and fold by 90 degrees;  
fold original corrugated sheet inward by 90 degrees.**

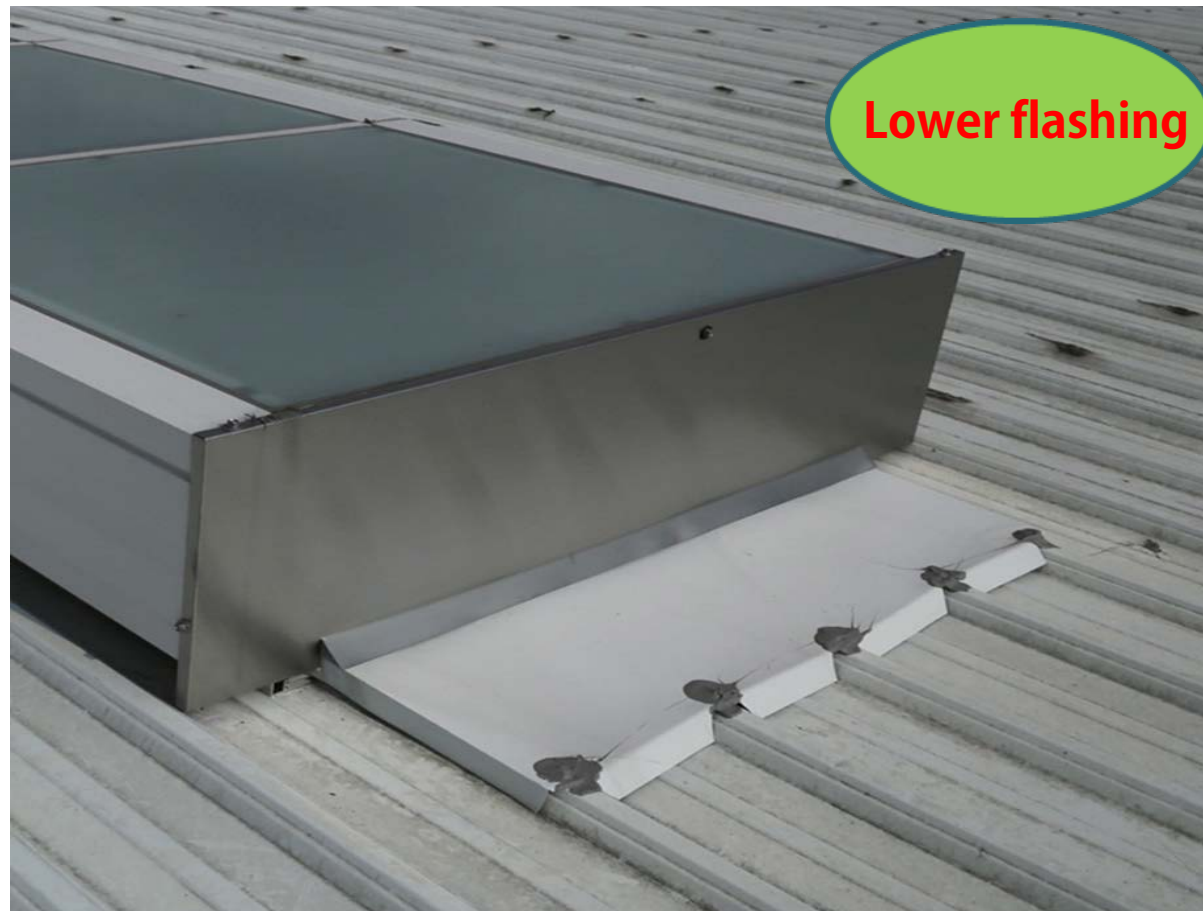


**9. Place 5x5 bonded roof white coating glass atop the skylight vent;  
secure the two by applying Dow Corning silicon in the gap between them.**





## 10. Secure frames to both ends.



## 11. Photos of skylight vents after installation.





# Construction along central ridge



# Photos of central ridge after construction

